

Better Together: Partnering to Address the Social Determinants of Health

Julia Sosa, MS, RD, LD
Whatley Health Services, Inc.



Culture



The Sum of all lived experiences:
What we know
Who we are
How we do things



Definition



Are conditions in the environment in which people are:

Born

Live

Learn

Work

Play

Worship

Age

That affect a wide range of

Health

Functioning

Quality of life outcomes and risks.

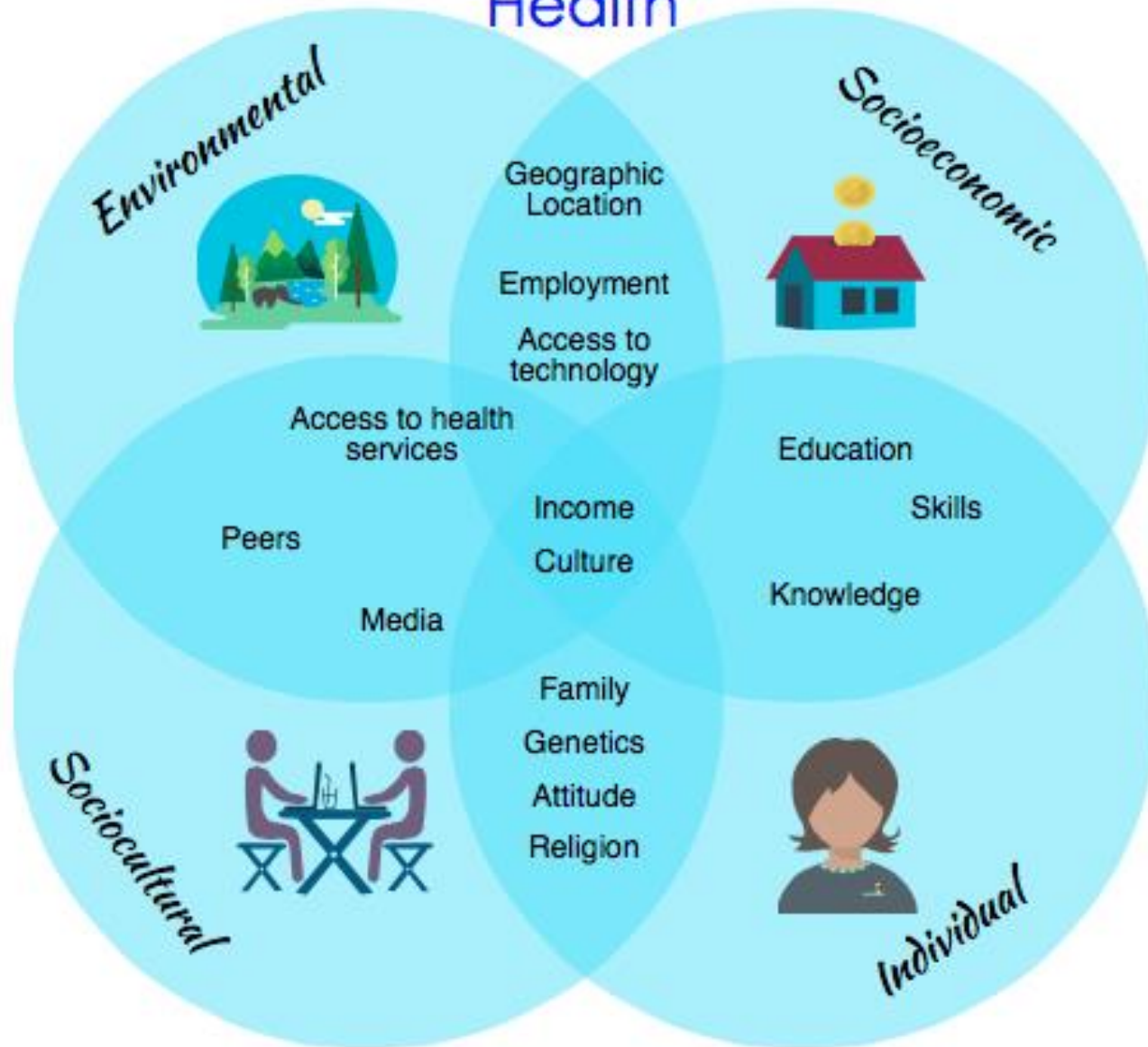
Resources that Enhance Quality of Life



- Safe and affordable housing
- Access to education
- Public safety
- Availability of healthy foods
- Local emergency/health services
- Environments free of life-threatening toxins



Interrelating Determinants of Health



Social Determinants



Availability of resources to meet daily needs

Access to educational, economic, and job opportunities- quality of education

Social norms and attitudes- discrimination, racism, and distrust of government

Transportation options

Language/literacy

Culture

Physical Determinants



- Natural environment
 - green space: trees and grass
 - Weather: climate change
- Built environment
 - Buildings, sidewalks, bike lanes, and roads
- Physical barriers
- Worksites, schools, and recreational settings
- Aesthetic elements
 - Good lighting, trees, benches

Economic Stability



- Employment
- Food insecurity
- Housing stability
- poverty

Education



- Early childhood education & development
- Enrollment in higher education
- High school graduation
- Language and literacy

Social and Community Context



- Civic participation
- Discrimination
- Incarceration
- Social cohesion

Health and Healthcare



- Access to health care
- Access to primary care
- Health literacy

Hospitals



- Counties without Hospitals
 - Cleburne
 - Coosa
 - Henry
 - Lamar
 - Lowndes
 - Macon
 - Perry
 - Winston

Neighborhood And Built Environment



- Access to foods that support healthy eating
- Crime and violence
- Environmental conditions
- Quality of housing

Utilizing Resources To Address SDOH



- Partners/Coalitions
- Resource Directory
- Assessments
 - Community
 - Health impact
 - Sociodemographics

Putting the Pieces Together



Vulnerable Counties



- Counties that have rapid dissemination of HIV and Hep C infection among persons who inject drugs
 - Walker
 - Franklin
 - Marion



Questions

Contact Information



Julia Sosa, MS, RD

Whatley Health Services Inc

2731 Martin Luther King Jr Blvd

Tuscaloosa, AL 35401

205-614-6132

jusosa@whatleyhealth.org